

# MONTHLY MEMBERSHIP PROGRESS REPORT

LOCATION KANSAS

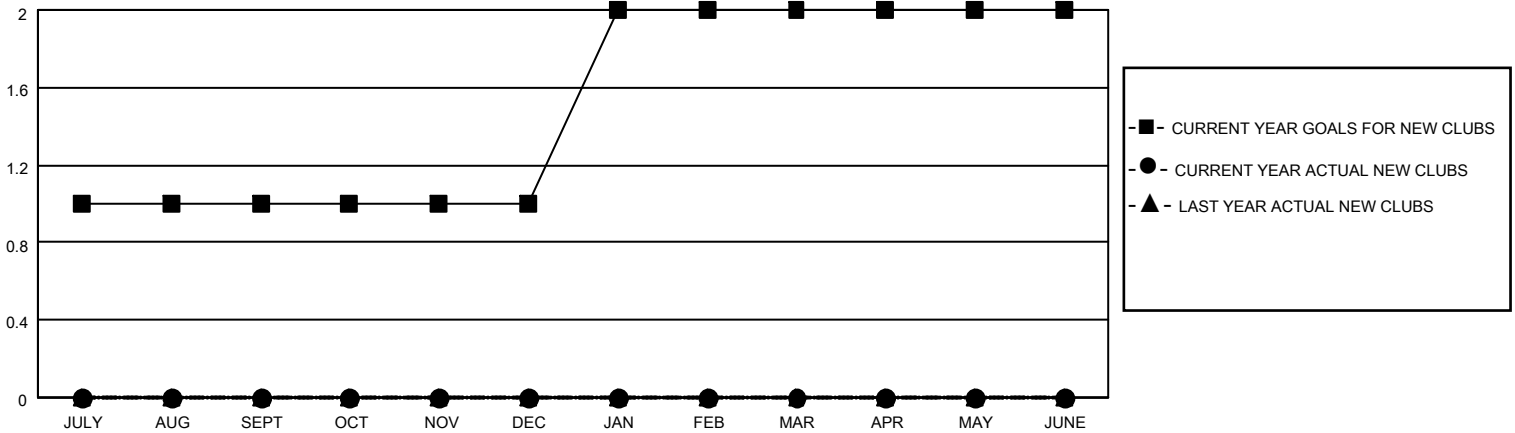
District 17 A

Results as of: 6/30/2022

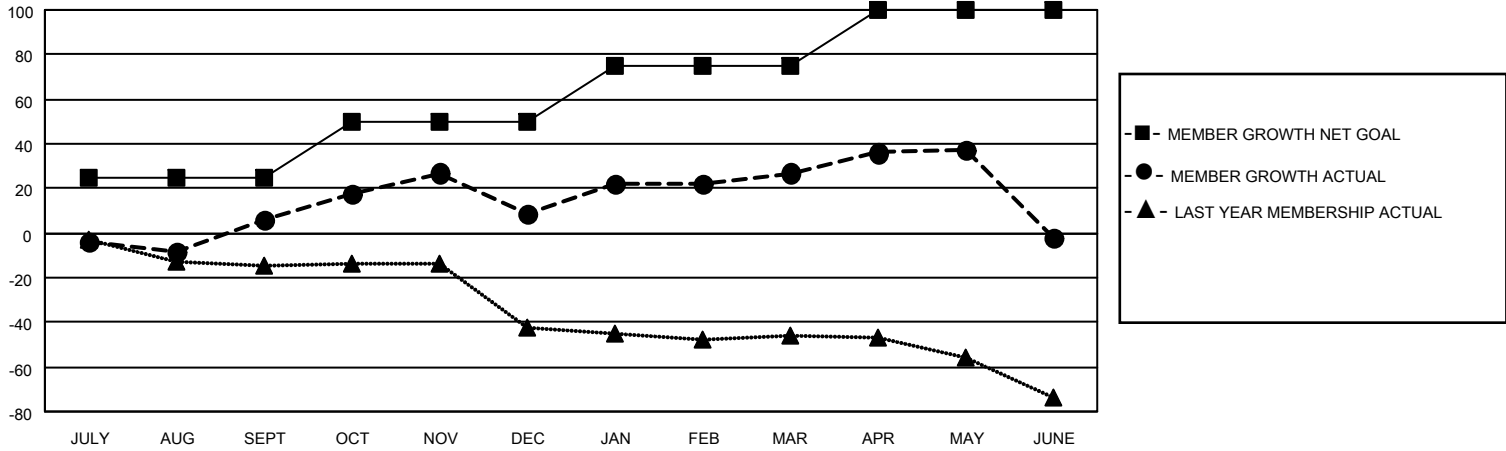
Clubs			
RESULTS FOR 2021-2022			
QUARTER	NEW CLUB GOAL	NEW CLUBS	DROPPED CLUBS
JULY/AUG/SEPT	1	0	0
OCT/NOV/DEC	0	0	0
JAN/FEB/MAR	1	0	0
APR/MAY/JUNE	0	0	0

Members			
RESULTS FOR 2021-2022			
QUARTER	MEMBER GROWTH NET GOAL	MEMBER GROWTH ACTUAL	DROPPED MEMBERS ACTUAL (including transfers)
JULY/AUG/SEPT	25	44	27
OCT/NOV/DEC	25	61	54
JAN/FEB/MAR	25	43	17
APR/MAY/JUNE	25	49	75

**GOALS AND ACTUAL NEW CLUBS CUMULATIVE**



**GOALS AND ACTUAL MEMBERS CUMULATIVE**



**DROPPED CLUBS: 0**

**45 CLUBS OF 73 ADDED 1 OR MORE NEW MEMBERS**

**GENDER DISTRIBUTION**

MALE	967 (63.79%)
FEMALE	548 (36.15%)
NON BINARY	0 (0.00%)
PREFER NOT TO ANSWER	1 (0.07%)

**DROPPED MEMBERS**

[CLICK HERE FOR CUMULATIVE MEMBERSHIP DATA](#)

DECEASED	23
CLUB CANCELLED	0
OTHER	150
<b>TOTAL</b>	<b>173</b>

TOTAL FAMILY UNIT MEMBERS 386

FAMILY MEMBERS PAYING HALF DUES 197